

100% Money Back
Guarantee

Vendor:HP

Exam Code:HPE6-A75

Exam Name:Aruba Certified Edge Professional Exam

Version:Demo

QUESTION 1

An administrator deploys an AP at a branch office. The branch office has a private WAN circuit that provides connectivity to a corporate office controller. An Ethernet port on the AP is connected to a network storage device that contains sensitive information. The administrator is concerned about sending this traffic in clear-text across the private WAN circuit.

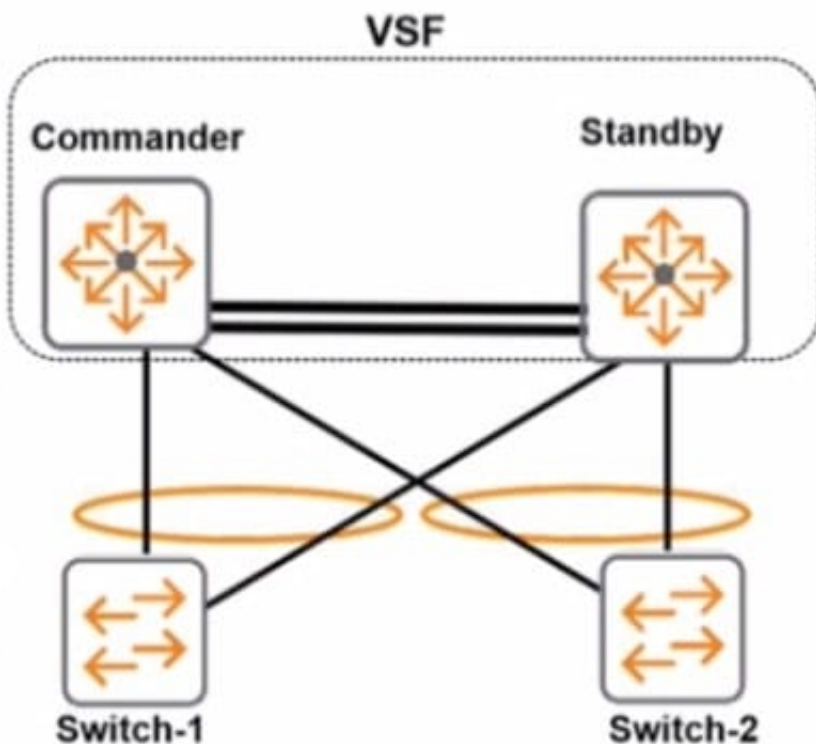
What can the administrator do to prevent this problem?

- A. Redirect the wired port traffic to an AP-to-controller GRE tunnel.
- B. Convert the campus AP into a RAP.
- C. Enable AP encryption for wired ports.
- D. Enable IPsec encryption on the AP's wired ports.

Correct Answer: D

QUESTION 2

Refer to the exhibit.



A known unicast packet is received from Switch-1 on the standby and must be forwarded to Switch-2. How does the VSF fabric decide which port in the aggregated link should forward the packet?

- A. The standby uses its own port in the link aggregation to forward the fabric.

- B. The standby sends the packet to the commander over a VSF link, and the commander decides the correct port.
- C. The standby uses the typical load sharing algorithm, and it might select either its port or the commander's port.
- D. The standby selects the port on the designated forwarder for the aggregation.

Correct Answer: A

QUESTION 3

Refer to the exhibit.

```
Switch# ping 10.1.10.5
10.1.10.5 is alive, time = 3 ms

Switch# show radius authentication

Status and Counters - RADIUS Authentication Information

NAS Identifier           : Access-1
Invalid Server Addresses : 0
                        UDP
Server IP Addr  Port  Timeouts  Requests  Challenges  Accepts  Rejects
-----
10.1.10.5      1812  6         3         0           0        0
```

A network administrator sets up 802.1X authentication to a RADIUS server on an AOS- Switch. The RADIUS server and user devices are both set up to use REAP MSCHAPv2. The administrator tests the authentication and sees the output shown in the exhibit. Which issue could cause this output?

- A. The RADIUS shared secret does not match on the switch and the server.
- B. The administrator entered the wrong password for the test account.
- C. The switch does not have a certificate for port-access installed on the switch.
- D. The switch port is set for user mode 801. IX. but the RADIUS server is set for port mode.

Correct Answer: A

QUESTION 4

An administrator implements the MultiZone feature and uses two clusters that utilize CPsec. A primary and a data zone are created. MultiZone APs successfully build sessions to the primary cluster but fail to establish sessions to the data zone cluster.

What must the administrator do to solve this problem?

- A. Enable CPsec in the MultiZone profile for both the primary and data zone.
- B. Enable MultiZone booting in the MultiZone AP apboot configuration mode.

- C. Add the MultiZone APs to the data zone's CPsec whitelist.
- D. Use different AP Group names for the two zones.

Correct Answer: D

QUESTION 5

Refer to the exhibit.

RADIUS Web Login

Use this form to make changes to the RADIUS Web Login **Guest Network**.

RADIUS Web Login Editor	
* Name:	<input type="text" value="Guest Network"/> <small>Enter a name for this web login page.</small>
Page Name:	<input type="text" value="Aruba_login"/> <small>Enter a page name for this web login. The web login will be accessible from "/guest/page_name.php".</small>
Description:	<div style="border: 1px solid #ccc; height: 40px; width: 100%;"></div> <small>Comments or descriptive text about the web login.</small>
* Vendor Settings:	<input type="text" value="Aruba Networks"/> <small>▼</small> <small>Select a predefined group of settings suitable for standard network configurations.</small>
Address:	<input type="text" value="securelogin.arubanetworks.com"/> <small>Enter the IP address or hostname of the vendor's product here.</small>
Secure Login:	<input type="text" value="Use vendor default"/> <small>▼</small> <small>Select a security option to apply to the web login process.</small>
Dynamic Address:	<input checked="" type="checkbox"/> The controller will send the IP to submit credentials <small>In multi-controller deployments, it is often required to post credentials to different add The address above will be used whenever the parameter is not available or fails the r</small>

Exhibit:accp67-442

When configuring a Web Login Page in ClearPass Guest, the information shown is displayed. What is the Address field value `securelogin.arubanetworks.com` used for?

- A. for ClearPass to send a TACACS+ request to the NAD
- B. for appending to the Web Login URL, before the page name
- C. for the client to POST the user credentials to the NAD
- D. for ClearPass to send a RADIUS request to the NAD

E. for appending to the Web Login URL, after the page name.

Correct Answer: C

QUESTION 6

Refer to the exhibit.

Exhibit 1

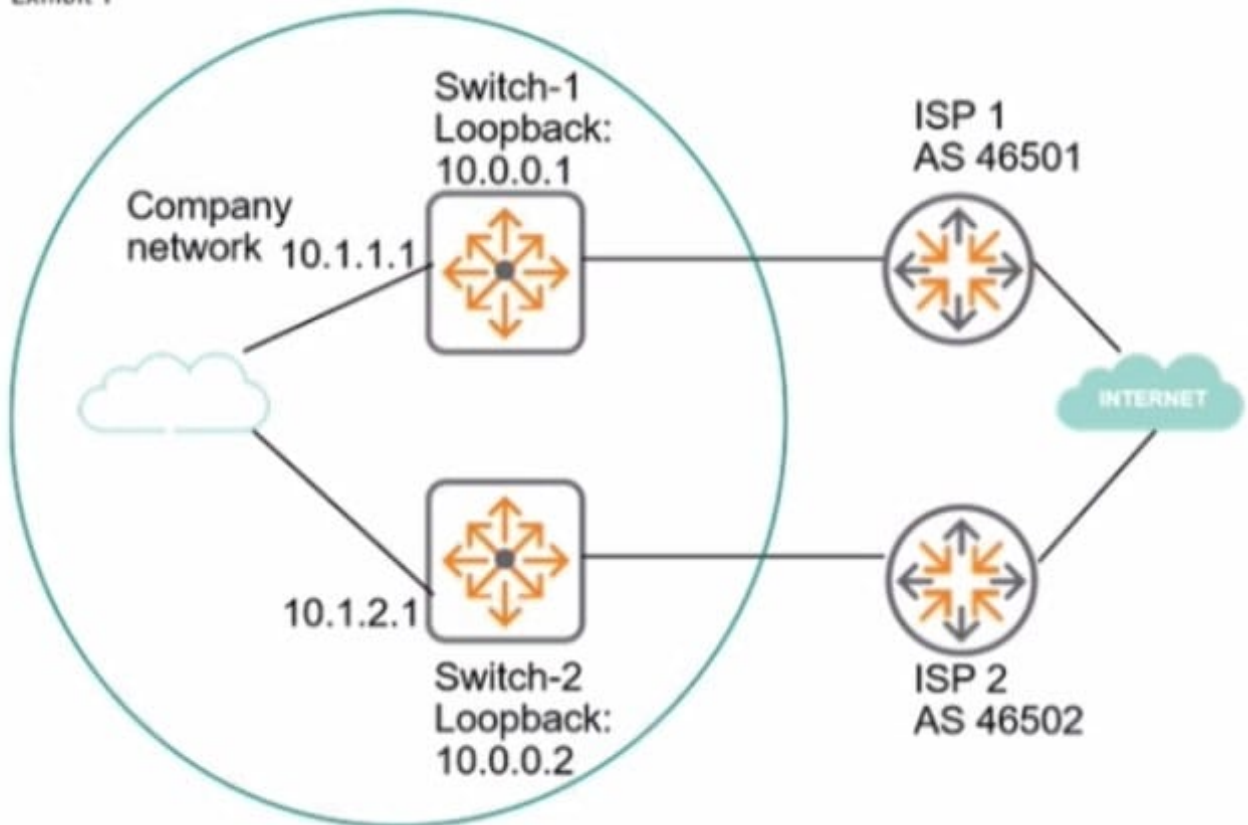


Exhibit 2

```
Switch-1# show ip bgp summary
```

```
Peer Information
```

Remote Address	Remote-AS	Local-AS	State	Admin Status
10.0.0.2	46500	46500	Connect	Start

```
Switch-1# show running-config router bgp
```

```
Running configuration:
```

```
router bgp 46500
  enable
  neighbor 10.0.0.2 remote-as 46500
  exit
```

```
Switch-2# show ip bgp summary
```

```
Peer Information
```

Remote Address	Remote-AS	Local-AS	State	Admin Status
10.0.0.1	46500	46500	Connect	Start

```
Switch-2# show running-config router bgp
```

```
Running configuration:
```

```
router bgp 46500
  enable
  neighbor 10.0.0.1 remote-as 46500
  exit
```

The network administrator needs to set up BGP between the two company switches. Switch-1 and Switch

2. The BGP connection does not establish. Based on the exhibits, what does the administrator need to do to fix the issue?

- A. Enable the multihop option for the neighbor on each of the switches.
- B. Enter the network command for 10.0.0.0/24 in the router BGP mode on each switch.
- C. Enable BGP on the interfaces that the switches use to reach each other.
- D. Set the update source for the neighbor to the local loopback interface on each switch.

Correct Answer: D

QUESTION 7

Refer to the exhibit.

Customize Form Fields

Use this list view to modify the fields of the form **create_user**.

Rank	Field	Type	Label	Description
10	sponsor_name	text	Sponsor's Name:	Name of the person sponsoring this visitor account.
15	sponsor_email	text	Sponsor's Email:	Email of the person sponsoring this visitor account.
20	visitor_name	text	Visitor's Name:	Name of the visitor.
25	visitor_phone	text	Phone Number:	The visitor's phone number.
30	visitor_company	text	Company Name:	Company name of the visitor.
40	email	text	Email Address:	The visitor's email address. This will become their username to log into the network.
50	modify_start_time	dropdown	Account Activation:	Select an option for changing the activation time of this account.

Exhibit: accp67-433

Based on the configuration of the create_user form shown, which statement accurately describes the status?

- A. The email field will be visible to guest users when they access the web login page.
- B. The visitor_company field will be visible to operators creating the account.
- C. The visitor_company field will be visible to the guest users when they access the web login page.
- D. The visitor_phone field will be visible to the guest users in the web login page.
- E. The visitor_phone field will be visible to operators creating the account.

Correct Answer: A

QUESTION 8

The administrator expects the AP to connect to a cluster, but the AP fails to connect. The administrator examines the configuration of an AP from apboot mode shown in the exhibit. What can the administrator determine about the configuration of the AP?

```
apboot> printenv
servername=aruba-master
name=AP1
group=apgroup1
cert_cap=1
backup_vap_init_master=10.1.20.100
num_ipsec_retry=85
backup_vap_password=3A28B643D862568...
backup_vap_opmode=0
backup_vap_band=2
rap_tftp_upgrade=0
cfg_lms=10.1.10.101
stdin=serial
<-output omitted->
```

- A. The AP is configured to terminate on a non-cluster Mobility Controller.
- B. The AP is configured as a RAP to terminate on a stand-alone controller.
- C. The AP is configured as a RAP to terminate on a Mobility Master.
- D. The AP is configured to terminate on a Mobility Controller in a cluster.

Correct Answer: C

QUESTION 9

A university wants to deploy ClearPass with the Guest module. They have two types of users that need to use web login authentication. The first type of users are students whose accounts are in an Active Directory server. The second type of users are friends of students who need to self-register to access the network.

How should the service be setup in the Policy Manager for this Network?

- A. Guest User Repository and Active Directory server both as authentication sources
- B. Active Directory server as the authentication source, and Guest User Repository as the authorization source
- C. Guest User Repository as the authentication source, and Guest User Repository and Active Directory server as authorization sources
- D. Either the Guest User Repository or Active Directory server should be the single authentication source
- E. Guest User Repository as the authentication source and the Active Directory server as the authorization source

Correct Answer: A

QUESTION 10

Refer to the exhibit.

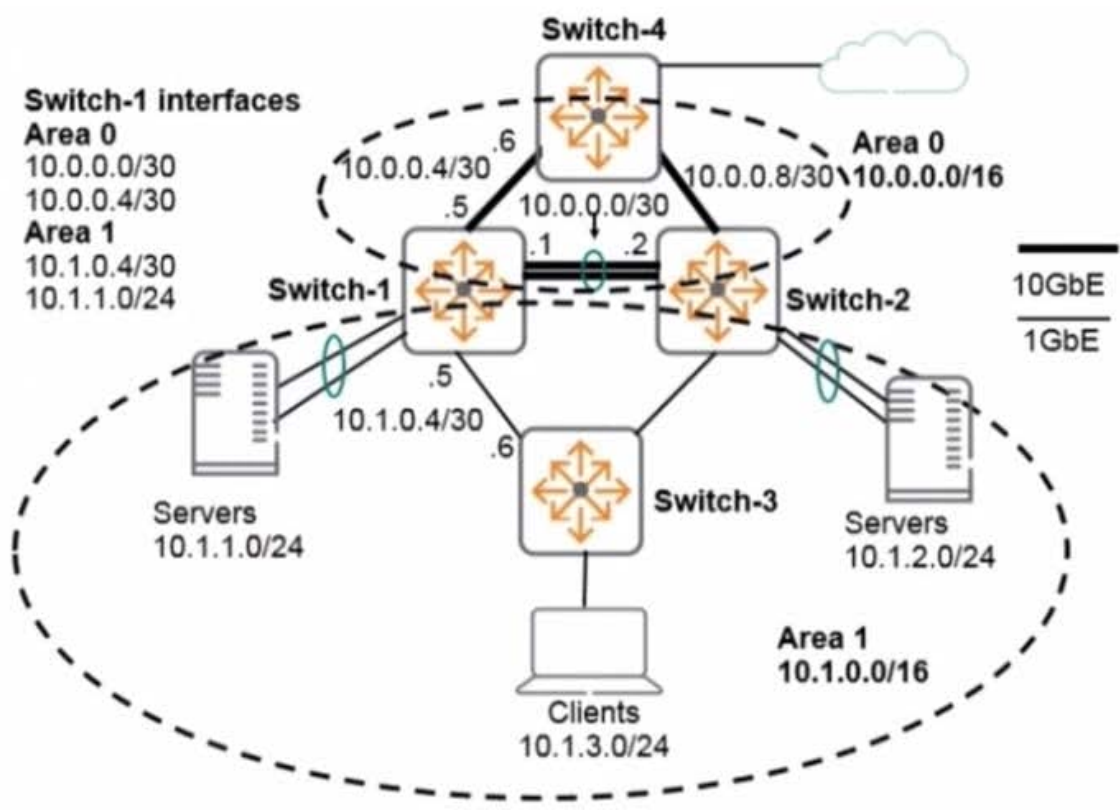


Exhibit 2

Switch-1# show ip route

IP Route Entries

Destination	Gateway	VLAN	Type	Sub-Type	Metric	Dist.
10.0.0.0/30	VLAN1000	1000	connected		5	0
10.0.0.4/30	VLAN1004	1004	connected		10	0
10.0.0.8/30	10.0.0.2	1000	ospf	IntraArea	15	110
10.1.0.4/30	VLAN104	104	connected		100	0
10.1.0.8/30	10.1.0.6	104	ospf	IntraArea	200	110
10.1.0.8/30	10.1.0.6	104	ospf	IntraArea	200	110
10.1.1.0/24	VLAN110	110	connected		50	0
10.1.2.0/24	10.1.0.6	104	ospf	IntraArea	250	110
10.1.3.0/24	10.1.0.6	104	ospf	IntraArea	200	110
10.2.0.0/16	10.0.0.6	1004	ospf	InterArea	110	110
10.3.0.0/16	10.0.0.6	1004	ospf	InterArea	110	110
127.0.0.0/8	reject		static		0	0
127.0.0.1/32	lo0		connected		1	0

Switch-1# show ip ospf neighbor

OSPF Neighbor Information

Router ID	Pri	IP Address	NbIfState	State	QLen	Events	Status
2.2.2.2	1	10.0.0.2	BDR	FULL	0	6	None
3.3.3.3	1	10.1.0.6	BDR	FULL	0	6	None
4.4.4.4	1	10.0.0.6	BDR	FULL	0	6	None

Traffic between the servers in Area 1 takes a less optimal path rather than the link associated with VLAN 1000, subnet 10.0.0.0/30. Based on the exhibits, why is this the case?

- A. The metric on the VLAN 1000 interface is too low.
- B. Switch-1 and Switch-2 cannot achieve adjacency on VLAN 1000 due to mismatches.
- C. OSPF routing switches choose the best intra-area routes based on Area 1 links only.
- D. The link between Switch-1 and Switch-2 has gone down.

Correct Answer: C

QUESTION 11

What is the purpose of the captive portal URL hash key on an AOS-Switch?

- A. It authenticates guest users based on the password the users enter in the portal.
- B. It encrypts and secures the RADIUS messages that the AOS-Switch sends to ClearPass.
- C. It does not let users alter the URL that redirects them to the portal.
- D. It specifies the captive portal URL and conceals the setting in the config.

Correct Answer: C

QUESTION 12

What is true about clustering and AP connections to cluster members?

- A. The AP will always stay connected to the LMS IP address configured in the AP profile.
- B. During rebalancing, the active load is redistributed first.
- C. The default thresholds are 75% for the Rebalanced Threshold and 25% for the Unbalanced Threshold.
- D. AP load balancing is disabled by default.

Correct Answer: D