

**100%** Money Back  
**Guarantee**

**Vendor:**Microsoft

**Exam Code:**70-331

**Exam Name:**Core Solutions of Microsoft SharePoint  
Server

**Version:**Demo

### QUESTION 1

Your company has an internal network and a perimeter network. The internal network contains an Active Directory domain.

You plan to deploy a SharePoint Server 2013 server farm. The farm will contain a single web application that uses NTLM authentication by using the domain controller on the internal network.

The relevant components on the network are listed in the following table.

Component name	Role	Location
Server1	Front-end Web server	Perimeter network
Server2	Database server	Internal network
Firewall1	Firewall	Between the Internet and the perimeter network
Firewall2	Firewall	Between the perimeter network and the internal network

All services use default TCP ports.

You need to configure the inbound rules for Firewall1 and Firewall2 to ensure that users from the Internet can access content in the farm by using either HTTP or HTTPS.

What should you configure? 0"o answer, drag the appropriate TCP ports to the correct firewalls. Each port may be used once, more than once, or not at all. You may need to drag the split bar between panes or scroll to view content.)

Select and Place:

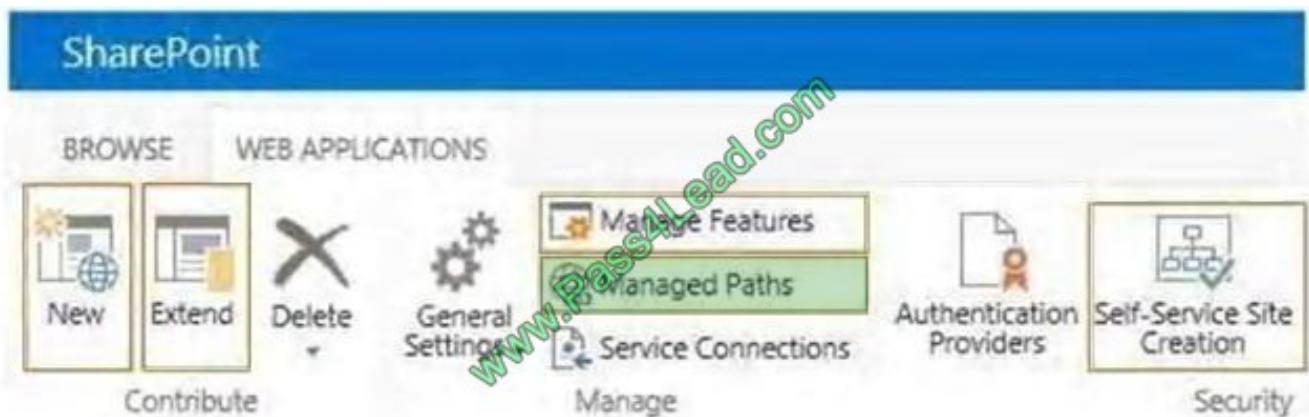
The screenshot shows a configuration interface with two main panes. The left pane, titled "TCP Ports", contains five input boxes with the following values: 80, 389, 443, 1433, and 32843. The right pane, titled "Answer Area", contains two rows of configuration boxes. The first row is labeled "Firewall1:" and has two "Port" boxes. The second row is labeled "Firewall2:" and has two "Port" boxes. A vertical split bar is positioned between the two panes.

Correct Answer:





Correct Answer:



Note:

When you define managed paths, you can specify the paths in the URL namespace of a web application to use for site collections.

You can specify that one or more site collections exist at a specified path. This can be a convenient method of combining multiple site access for users in various

departments.

Reference: Define managed paths in SharePoint Server 2013

#### QUESTION 4

A company plans to make Office Web Apps available for all users. The company deploys a multiserver, load-balanced Office Web Apps server farm.

You install and configure SSL certificates.

The SharePoint farm operates in both internal and external zones.

You have the following requirements:

Servers must connect to both zones.

The Office Web apps farm must communicate securely with SharePoint Servers.

You need to configure the environment.

How should you complete the relevant Windows PowerShell commands? To answer, drag the appropriate Windows PowerShell segments to the correct location. Each Windows PowerShell segment may be used once, more than once, or not

at all. You may need to drag the split bar between panes or scroll to view content.

Select and Place:

PowerShell segments	Answer Area
New-SPWOPIBinding	Windows PowerShell segment -ServerName "owas.contoso.com"
Get-SPWOPIZone	Windows PowerShell segment
Set-SPWOPIZone	Windows PowerShell segment -zone " Windows PowerShell segment "
external-https	
Set-SPWOPIBinding	
internal-http	
internal-https	
external-http	

Correct Answer:



We must use secure communication, https not http. Only use HTTP when you are on a fully secure network that uses IPSEC (full encryption) or in a test environment that does not contain sensitive data.

Example:

```
Set-SPWOPIZone -Zone "external-https"
```

This example configures the current SharePoint farm to use external connections through HTTPS to the WOPI application (such as a server that runs Office Web Apps Server).

Incorrect answers:

\* Set-SPWOPIBinding

The Set-SPWOPIBinding cmdlet updates the default click action for an application or file name extension binding. For example, you can set the default click action for viewing a Word document in a SharePoint library.

But we are not require to redefine click actions.

Typically, you would use the output of the Get-SPWOPIBinding command as the value for the -Identity property of this command.

Example: Get-SPWOPIBinding -Action "view" -Application "Word"| Set-SPWOPIBinding -DefaultAction

Reference: <https://technet.microsoft.com/en-us/library/jj219441.aspx> <https://technet.microsoft.com/en-us/library/jj219451.aspx>

---

## QUESTION 5

You are managing a SharePoint farm in an Active Directory Domain Services (AD DS) forest.

The forest contains two domains named americas.contoso.com and europe.contoso.com. A single SharePoint farm is located in the americas.contoso.com domain and uses Kerberos authentication.

Users in the europe.contoso.com domain cannot access the Excel Services application in the americas.contoso.com domain when using an external data source.

You need to ensure that users in the europe.contoso.com domain can use the Excel Services application with external data sources.

What should you do?

- A. Deploy a SharePoint farm in the europe.contoso.com domain.
- B. Configure Kerberos constrained delegation.
- C. Configure basic Kerberos delegation.
- D. Configure anonymous access in the SharePoint farm.

Correct Answer: A

---

## QUESTION 6

## HOTSPOT

You manage a SharePoint farm in an Active Directory Domain Services (AD DS) forest, You implement SharePoint Online. You plan to create a result source in SharePoint Online Services to return search results from an on-premises SharePoint farm.

You have the following requirements:

- Users must be able to search on-premises content by using the URL <https://spexternal.adventureworks.com>.
- Users must be able to search SharePoint Online resources by using the URL <https://adventureworks.sharepoint.com>
- Users must not be required to authenticate each time that they access SharePoint Online.
- Searches from the SharePoint Online enterprise search center must display results from the on-premises SharePoint environment and SharePoint Online.

You need to create the result source.

Hot Area:

Parameter	Value
URL	<a href="https://spexternal.adventureworks.com">https://spexternal.adventureworks.com</a> <a href="https://adventurewrks.sharepoint.com">https://adventurewrks.sharepoint.com</a>
Protocol	OpenSearch 1.0/1.1 Remote SharePoint
Authentication	single sign-on ID default authentication

Correct Answer:

Parameter	Value
URL	<a href="https://spexternal.adventureworks.com">https://spexternal.adventureworks.com</a> <a href="https://adventurewrks.sharepoint.com">https://adventurewrks.sharepoint.com</a>
Protocol	OpenSearch 1.0/1.1 Remote SharePoint
Authentication	single sign-on ID default authentication

---

## QUESTION 7



You are configuring a query rule for a site in a SharePoint site collection.

You need to promote specific search results during a defined date range only.

Which two actions should you perform? (Each correct answer presents part of the solution. Choose two.)

- A. Configure actions for the rule.
- B. Configure query conditions for the rule.
- C. Add the rule with a source type.
- D. Add the rule without a source type.
- E. Configure publishing options for the rule.

Correct Answer: AE

Without using any custom code, Search service application administrators, site collection administrators, and site owners can help searches respond to the intent of users by creating query rules. In a query rule, you specify conditions and correlated actions. When a query meets the conditions in a query rule, the search system performs the actions specified in the rule to improve the relevance of the search results, such as by narrowing results or changing the order in which results are displayed. For example, a query rule condition could be that a term in a query matches a particular term in a SharePoint term set, or that a query is frequently performed on a particular result source in a search system, such as videos. When the query rule condition is satisfied, a correlated action could be to show a specific item at the top of the search results.

You can configure query rules for one or more result sources, and you can specify the time period during which the query rule is active.

E: To make the query rule active during a particular time period, click **Publishing**, and then specify the period. Reference: [Manage query rules in SharePoint Server 2013](#)

---

## QUESTION 8

You plan to deploy a SharePoint Server 2013 server farm.

You have a network share named Share1 that contains the extracted installation files for SharePoint Server 2013.

You download a cumulative update for SharePoint Server 2013 named Cu1.exe. You need to create a slipstreamed installation source that contains the cumulative update.

What should you do?

- A. Run `cul.exe` and specify the `/extract` parameter.
- B. Copy `Cul.exe` to the `Updates` folder in `Share1`.
- C. Run `setup.exe` and specify the `/extract` parameter.
- D. Create a folder named `15\Resources` in `Share1`, and then copy `Cul.exe` to the `15\Resources` folder.

Correct Answer: A

Extract the contents of the downloaded update file to the `Updates` folder in the SharePoint installation source with the

following command: {FileName}.exe /extract:C:\SPInstall\Updates

Note: SharePoint updates that have been released since the product launch provide fixes and enhancements to the product, and including these updates in a new installation is recommended. Rather than manually applying the updates after installing SharePoint, you can include them in a `slipstream` mode so that they are automatically installed with SharePoint.

---

### QUESTION 9

You provision a Search service application and a User Profile service application for a SharePoint farm.

A company policy requires that an account other than the default content access account must be used for crawling content.

You need to configure permissions to crawl the profile store.

Which User Profile service application object should you configure? (To answer, select the appropriate object in the answer area.)

Hot Area:



Correct Answer:



### QUESTION 10

You create a SharePoint site for collaboration with external partners. The network team configures the reverse proxy server and publishes the SharePoint site.

Partners cannot sign in to the SharePoint site.

You need to ensure that partners can access the SharePoint site.

In Central Administration, on which page should you configure the settings? (To answer, select the appropriate page in the answer area.)

Hot Area:

## Central Administration

Application  
Management

System Settings

Monitoring

Backup and Restore

Security

Upgrade and Migration

General Application  
Settings

Apps

Configuration Wizards

Correct Answer:

## Central Administration



Explanation/Reference:

\* Reverse proxy server A reverse proxy server that supports Secure Sockets Layer (SSL), such as Microsoft Forefront Unified Access Gateway (UAG), enables

you to publish SharePoint sites across the corporate firewall.

\* See step 2 below:

After the SharePoint site is published outside the firewall, you must add the site to a zone that allows for cross-firewall access. A cross-firewall access zone is

used to generate external PC and mobile URLs in mobile alert messages, and enables users to send an externally available URL when they click the E-mail a link

or Alert Me button on the ribbon.

To configure a cross-firewall access zone

1. Verify that you have the following administrative credentials:

You must be a member of the Farm Administrators group.

2. In Central Administration, click System Settings.
3. On the System Settings page, under Farm Management, click Configure cross firewall access zone.
4. On the Cross Firewall Access Zone page, in Web Application, in the Web Application list, select the web application that is published across the firewall.
5. In Cross Firewall Access Zone, in the Zone selection for cross firewall access list, select the zone that is published across the firewall.

Reference: Configure external access for mobile devices in SharePoint 2013

---

#### **QUESTION 11**

A SharePoint environment was set up by using an automated installation script. Corporate policies prevent the use of wizards for installing and configuring server environments.

You plan to provide information from an external business system as metadata values within the environment. Users are not permitted to access this business system directly and the data cannot be exported from the external business system into SharePoint.

You need to ensure that users can access the metadata provided by the external system.

Which service should you configure? (To answer, select the appropriate service in the answer area.)

Hot Area:

Machine Translation Service Application

Machine Translation Service Application

Managed Metadata Service Application

Managed Metadata Service Application

Search Administration Web Service for Search Service Application

Search Service Application

Search Service Application

Secure Store Service Application

Secure Store Service Application

Security Token Service Application

State Service

State Service

Correct Answer:

Machine Translation Service Application

Machine Translation Service Application

Managed Metadata Service Application

Managed Metadata Service Application

Search Administration Web Service for Search Service Application

Search Service Application

Search Service Application

Secure Store Service Application

Secure Store Service Application

Security Token Service Application

State Service

State Service

---

**QUESTION 12**

You have a SharePoint Server 2013 server farm.

You need to view the errors generated by a Web Part.

What should you use?

- A. The administrative reports
- B. The SharePoint trace logs
- C. The site collection health checks
- D. The SharePoint Health Analyzer

Correct Answer: B

To Read the [Whole Q&As](#), please purchase the [Complete Version](#) from [Our website](#).

## Try our product !

**100%** Guaranteed Success

**100%** Money Back Guarantee

**365** Days Free Update

**Instant Download** After Purchase

**24x7** Customer Support

Average **99.9%** Success Rate

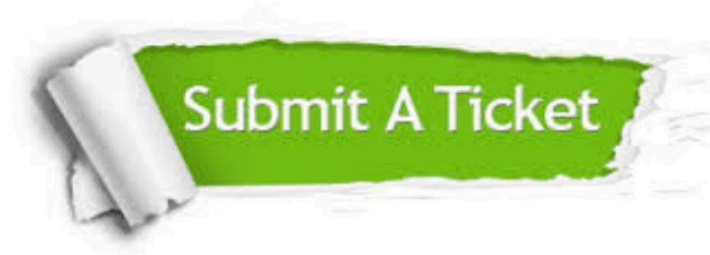
More than **800,000** Satisfied Customers Worldwide

Multi-Platform capabilities - **Windows, Mac, Android, iPhone, iPod, iPad, Kindle**

## Need Help

Please provide as much detail as possible so we can best assist you.

To update a previously submitted ticket:



 <p><b>One Year Free Update</b> Free update is available within One Year after your purchase. After One Year, you will get 50% discounts for updating. And we are proud to boast a 24/7 efficient Customer Support system via Email.</p>	 <p><b>Money Back Guarantee</b> To ensure that you are spending on quality products, we provide 100% money back guarantee for 30 days from the date of purchase.</p>	 <p><b>Security &amp; Privacy</b> We respect customer privacy. We use McAfee's security service to provide you with utmost security for your personal information &amp; peace of mind.</p>
---	---	--

Any charges made through this site will appear as Global Simulators Limited.

All trademarks are the property of their respective owners.