

100% Money Back Guarantee

Vendor: Microsoft

Exam Code: 70-086

Exam Name: Implementing and Supporting Systems Management Server 2.0

Version: Demo

Question: 1

U7 are preparing to distribute software to a group of client computers. You want all new Microsoft Windows 98 computers to automatically receive the software advertisement when they are added to the SMS site. What should you do?

- A Assign all the client computers to the same distribution point
- B Assign all the client computers to the same client access point
- C Create a static membership rule for the client computers
- D Use a query to define a membership rule for the client computers

Answer: D

Question: 2

You create a package to distribute an application to all Microsoft Windows NT workstation 4.0 computers in your SMS site. What else must you create the application can be distributed to these workstations?

- A A query
- B A collection
- C An advertisement
- D A distribution point

Answer: C

Question: 3

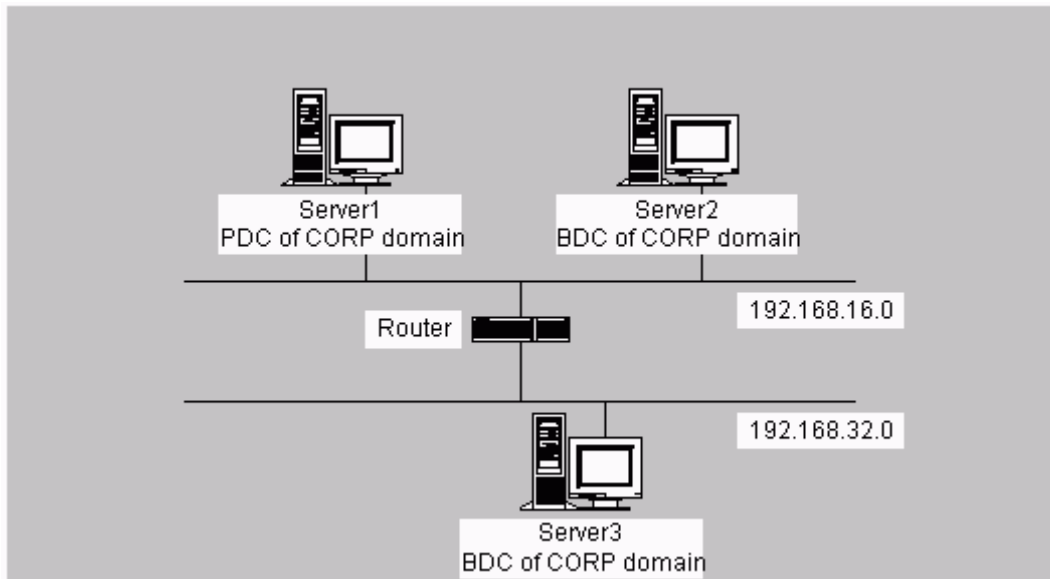
Examsheets has a primary site in a Microsoft Windows NT domain. Examsheets uses TCP/IP as its network protocol. Examsheets purchases another company. You want to create a child site on the other company's network. This network consists of NetWare 3.12 server, and it uses IPX/SPX as its network protocol. What should you do?

- A Install TCP/IP on the NetWare 3.12 servers. Install the secondary site from the SMS CD-ROM on one of the NetWare 3.12 servers.
- B Install the NWLink protocol on the SMS primary site server. Install the secondary site from the SMS CD-ROM on one of the NetWare 3.12 servers.
- C Convert one of the NetWare 3.12 servers to a Windows NT server computer. Install only the NWLink protocol on the Windows NT server computer. Install the secondary site from the SMS CD-ROM on the Windows NT server computer.
- D Convert one of the NetWare 3.12 servers to a Windows NT server computer. Install both TCP/IP and the NWLink protocol on the Windows NT server computer. Install the secondary site from the SMS CD-ROM on the Windows NT server computer.

Answer: D

Question: 4

Examsheet's network consists of two subnets, as shown in the exhibit. You use Custom Setup to install an SMS primary site on Server1. You then configure your site boundaries to include both subnets. Which computer or computers will be automatically configured as SMS logon points?



- A Only server 1
- B Only server1 and server 2
- C Server 1, server 2, and server 3
- D No computers will be automatically configured as logon points

Answer: D

Question: 5

Examsheet's network has five Microsoft Windows NT server computers. The server computers are configured as shown in the following table:

Name	Role	Domain
Server1	PDC	CORP
Server2	BDC	CORP
Server3	Member server	CORP
Server4	PDC	RESEARCH
Server5	BDC	RESEARCH

All the server computers are on the same LAN. You run SMS setup and select the Custom option to install a primary site on Server2. Which server computer or computers will become client access points by default?

- A Only server 1
- B Only server 2
- C Only server1 and server 2
- D Server 1, server 2, and server 3
- E Server 1, server 2, server 4, and server 5
- F No server computers become client access points by default

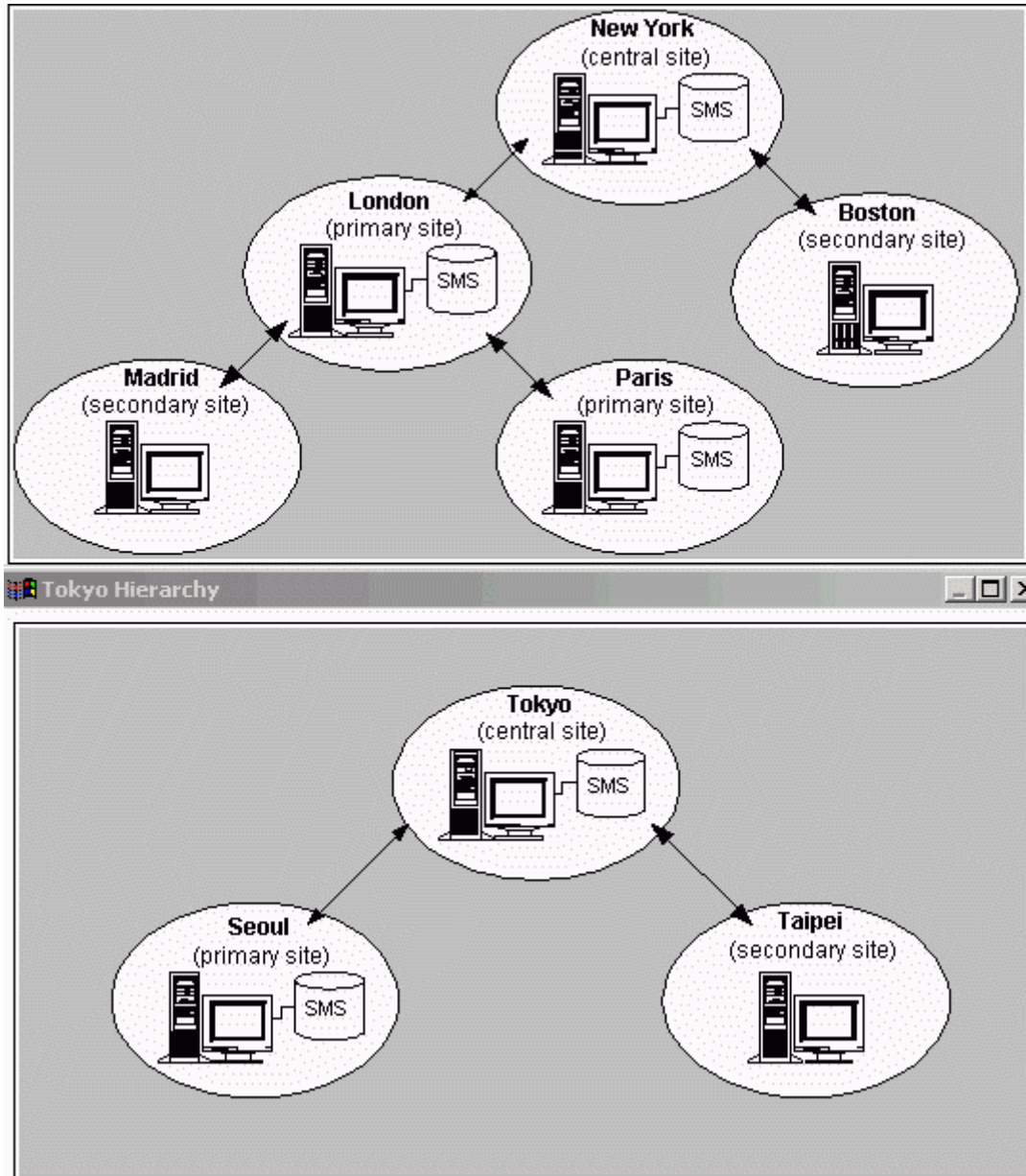
Answer: B

Explanation:

The questions ask about Client Access Point by Default.

Question: 6

You manage an SMS site for Examsheets from the corporate office in New York. Your organization has merged with another company named Fabrikam, Inc., which has its headquarters in Tokyo. The SMS site hierarchies for Examsheets and for Fabrikam, Inc., are shown in the exhibit. You want to integrate the Fabrikam, Inc., site hierarchy into Examsheet's site hierarchy. You want the Tokyo, Taipei and Seoul sites to be direct child sites of the New York site. Which three actions should you perform? (Choose Three)



- A Configure the Tokyo site and the Seoul site with a site address for the New York site
- B Configure the New York site with a site address for the Tokyo, Taipei, and Seoul sites
- C Detach the Seoul site and the Taipei site from the Tokyo site. Attach the Tokyo, Taipei, and Seoul sites to the New York site

- D Attach the Tokyo site to the New York site Detach the Seoul site and the Taipei sites from the New York site Attach the Taipei site and the Seoul site to the New York site
- E Detach the Seoul site from the Tokyo site Remove SMS from the Taipei site Attach the Tokyo site and the Seoul site to the New York site Install the Taipei site from the New York site
- F Detach the Seoul site from the Tokyo site Remove SMS from the Taipei site and the Seoul site Attach the Tokyo site to the New York site Install the Seoul site and the Taipei site from the New York site

Answer: A, B, E

Question: 7

Your network consists of a single domain that includes one PDC and five BDCs You install an SMS site server on one of the BDCs You want to configure the site for software distribution Which two site system roles will the computers at your site perform by default? (Choose two)

- A Each BDC will become a distribution point
- B Each BDC will become a clear access point
- C Each PDC will become a distribution point
- D Each PDC will become a clear access point
- E The site server will become a distribution point
- F The site server will become a client access point

Answer: E, F

Question: 8

Examsheet's network has five Microsoft Windows NT server computers The server computers are configured as shown in the following table

Name	Role	Domain
Server1	PDC	CORP
Server2	BDC	CORP
Server3	Member server	CORP
Server4	PDC	RESEARCH
Server5	BDC	RESEARCH

All the server computers are on the same LAN You run SMS setup and select the Custom option to install a primary site on Server2

Which server computer or computers will become logon points by default?

- A Only server 1
- B Only server 2
- C Only server1 and server 2
- D Server 1, server 2, and server 3
- E Server 1, server 2, server 4, and server 5
- F No server computers become logon points by default

Answer: F

Explanation:

From the MS SMS Press Book (Chapter 10, lesson 2): "Windows NT Logon Points- If windows Networking Logon Discovery is enabled, then all domain controllers in the domains added to this discovery method are installed as logon points It is possible to prevent some domain controllers from being installed; all are installed

Question: 9

You plan to run the SMS administrator console simultaneously on four Microsoft Windows NT workstation computers on your network. How many available Microsoft SQL sever connections are recommended to support these four SMS administrator consoles?

- A 5
- B 8
- C 16
- D 20

Answer: D

Question: 10

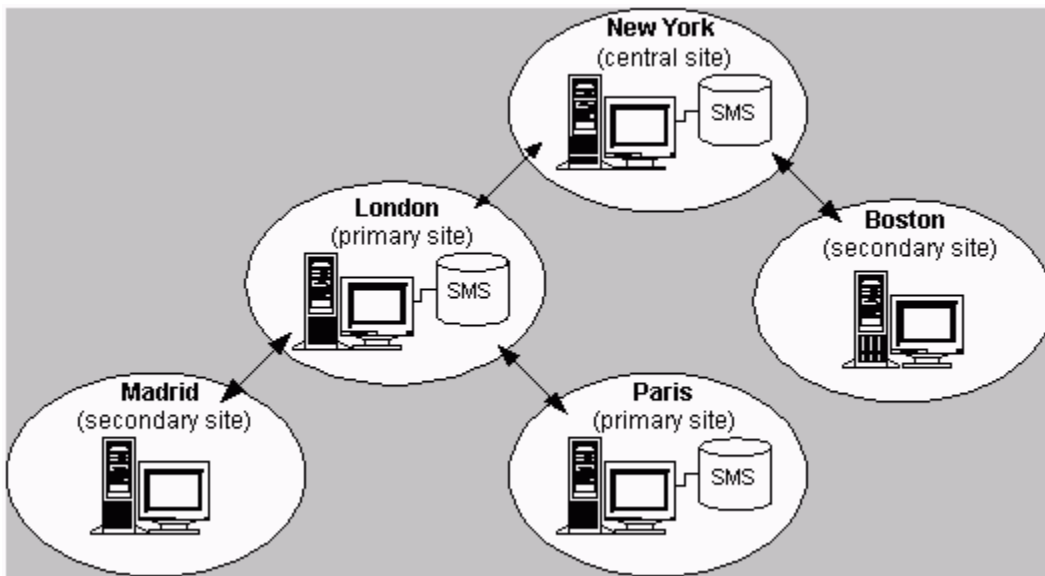
You have installed a primary site server at Examsheet's headquarters | London. You want to create a secondary site at a branch office in Paris. The two locations are connected by a high-speed WAN. Which two methods can you use to install the secondary site? (Choose two)

- A On the primary site server in London, run SMS Setup from the SMS setup from the SMS CD-Rom to create the Paris site
- B On the computer in Paris that will become the secondary site server, run the SMS setup from the SMS Cd-ROM
- C From the SMS Administrator console in the London site, create a new site for Paris
- D From the SMS Administrator console in the London site, create a package and an advertisement to install the secondary site server in Paris
- E From the SMS Administrator console in the London site, select the computer in Paris that will become the secondary site server and define it as a distribution point

Answer: B, C

Question: 11

Your site hierarchy is configured as shown in the exhibit. You want to be able to create software packages in the New York site and distribute the packages to all other sites. Which site addresses must exists in the New York site?



- A Only in Madrid and Paris
- B Only London and Boston
- C Only London, Boston, and Paris
- D London, Boston, Madrid, and Paris

Answer: B

Question: 12

You want to install a new SMS primary site server on a computer named Server 1 by using Express setup. However, when you run SMS setup on Server1, SMS Setup does not offer you the Express option. What is the most likely cause of the problem?

- A Microsoft SQL server is not installed on server 1
- B Microsoft SQL server is already installed on server 1
- C Server 1 has an Alpha processor
- D No database device exists on server1
- E No SMS service account exists in the server 1 domain

Answer: B

Question: 13

You want SMS to notify you when an unauthorized DHCP server is found on the network. What should you do?

- A Run Network trace
- B Run network Monitor
- C Run Network Monitor Control Tool
- D Run SMS Status Message Viewer

Answer: C

Question: 14

Maria uses a Microsoft Windows NT workstation computer. You want to notify Maria when a specific SMS component reports an error status message. How can you accomplish this goal?

- A Configure the Static Manager to report specific errors to Maria
- B Configure the Alerter service to monitor the error status messages on the SMS site server
- C Configure the scheduler service to periodically open the event Log and report specific error to Maria
- D Configure a status filter rule the net Send command to notify Maria when an error static message occurs

Answer: D

Question: 15

You want to quickly identify any SMS components that have failed on your site server. Which tool should you use?

- A SMS Trace
- B Health Monitor
- C Network Trace
- D Network Monitor

Answer: C

To Read the [Whole Q&As](#), please purchase the [Complete Version](#) from [Our website](#).

Trying our product !


- ★ **100%** Guaranteed Success
- ★ **100%** Money Back Guarantee
- ★ **365 Days** Free Update
- ★ **Instant Download** After Purchase
- ★ **24x7** Customer Support
- ★ Average **99.9%** Success Rate
- ★ More than **69,000** Satisfied Customers Worldwide
- ★ Multi-Platform capabilities - **Windows, Mac, Android, iPhone, iPod, iPad, Kindle**

Need Help

Please provide as much detail as possible so we can best assist you.

To update a previously submitted ticket:



 One Year Free Update <p>Free update is available within One Year after your purchase. After One Year, you will get 50% discounts for updating. And we are proud to boast a 24/7 efficient Customer Support system via Email.</p>	 Money Back Guarantee <p>To ensure that you are spending on quality products, we provide 100% money back guarantee for 30 days from the date of purchase.</p>	 Security & Privacy <p>We respect customer privacy. We use McAfee's security service to provide you with utmost security for your personal information & peace of mind.</p>
---	---	--

[Guarantee & Policy](#) | [Privacy & Policy](#) | [Terms & Conditions](#)

Any charges made through this site will appear as Global Simulators Limited.

All trademarks are the property of their respective owners.

Copyright © 2004-2015, All Rights Reserved.